

670

Passaic Avenue

WEST CALDWELL, NJ

Self-storage re-imagined.



Now available.

108,000 sq.ft. self-storage facility.

tulfra[®]
real estate

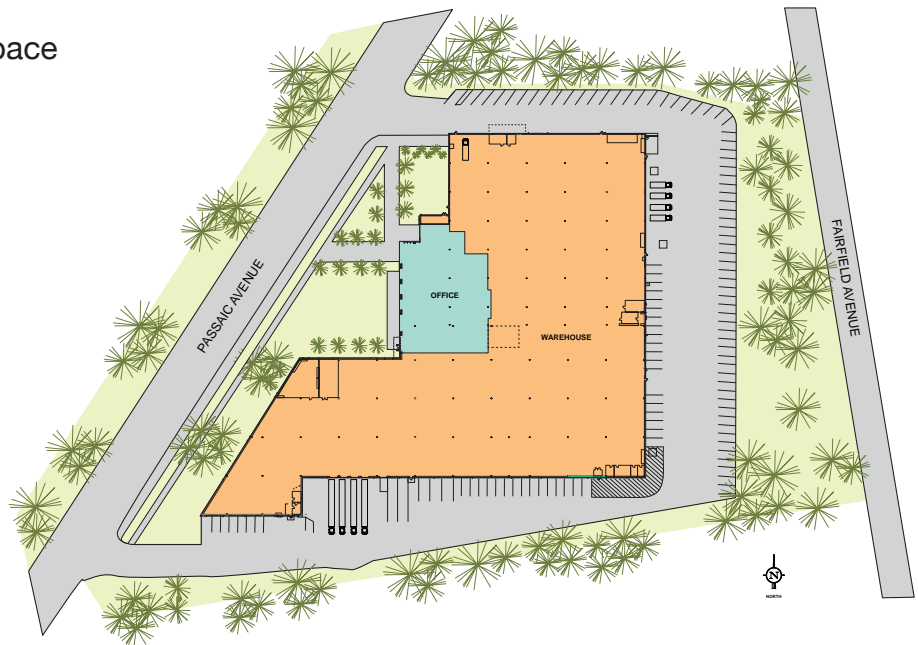
670

Passaic Avenue

WEST CALDWELL, NJ



- 670 Passaic Avenue, West Caldwell, New Jersey 07006
- Convenient to Routes 46, 280, 287, 80, Garden State Parkway, NJ Turnpike, Bloomfield Ave., Newark/Liberty International Airport, Lincoln Tunnel and George Washington Bridge
- 108,000 sq. ft. of self-storage space
- 1,500 units – various sizes
- State-of-the-art security
- Year round climate control



For more information please contact:

Sonny Jumani

President, 201.587.9797 x327

sjumani@tulfra.com

tulfra[®]
real estate

Exclusive Broker

